

Manitoba
Department of Mines and Natural Resources
MINES BRANCH

THE CORRESPONDING SHEET OF THE NATIONAL TOPOGRAPHIC SERIES IS 64 C/12

Map No. 4

LEGEND

PRECAMBRIAN

- 19 Pegmatite, aplite.
18 Pink and grey biotite and hornblende granite and granodiorite.

SICKLE SERIES

- KISSEYNEW-TYPE GNEISSES
Some probably derived from Wasekan sediments.
- 14 Arkose and quartzite, feldspathic sandstone.
24 Quartz-biotite-hornblende-plagioclase gneiss, locally garnetiferous. Includes much aplitic material as stringers.
23 Stratiform granitoid paragneiss, locally sillimanitic; undifferentiated granite gneiss. Abundant pegmatite and aplite.
21 Plagioclase amphibolite bands probably derived from lime-rich sedimentary bands. Locally garnetiferous.
20 Feldspathic muscovite-biotite schist derived from arkose; much pegmatite. Local pebble beds.

UNCONFORMITY

- 12 Pink to buff biotite and hornblende granite.
11 Grey hornblende-biotite granodiorite, 11a Leucotonalite.
10 Grey hornblende-biotite diorite and quartz diorite.
9 Gabbro and hornblende; includes some tremolite-talc rock, and minor diorite. Possibly includes some undifferentiated basaltic flows.

WASEKAN SERIES

- 7 Tuff, agglomerate, and breccia; some interbedded sedimentary rocks.
6 Plagioclase amphibolite derived from andesite and basalt; derived schists and gneisses. Minor interbedded sediments and pyroclastics. Some trachyte.
3 Interbedded volcanic, sedimentary, and/or tuffaceous rocks.
2 Greywacke, quartzite and derived quartz-biotite-hornblende-feldspar gneisses and schists; locally garnetiferous. Minor staurolite and sillimanite gneiss. Some undifferentiated pyroclastics.

SYMBOLS

- Geological boundary approximate assumed doubtful
Outcrop, or area of small outcrops
Strike and dip of bedding inclined vertical top known overturned
Strike and dip of schistosity or foliation inclined vertical Dip not reported
Trace of axial plane: syncline, anticline
Shear zone or fault, with direction of motion and plunge of linear features.
Supposed location of synclinal axis known assumed
Glacial striae
Esker
Prospect pit, or trench
Anomalous magnetic declination
Area of mixed or hybrid rocks
Rapids, Falls and portage (with length)
Dam
Rock or reef, covered at high water
Swamp or open muskeg
Centre of aerial photograph

Geology by:
G. C. MILLIGAN, 1957
Based on field work of:
M. S. STANTON, 1948
G. C. MILLIGAN, 1950

Supplemented by maps and reports of exploration companies now, or formerly, active in the area.

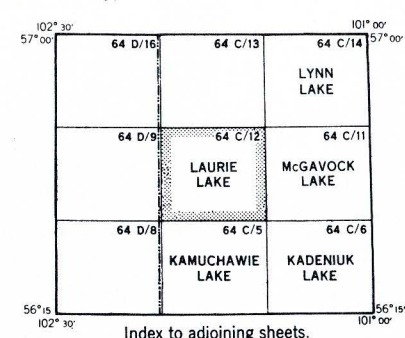
To accompany Publ. 57-1

Note: Since field work for these maps was done, the water level has been raised approximately seven feet by the storage dam on Eagle Lake, with considerable change in shoreline details at all points upstream.

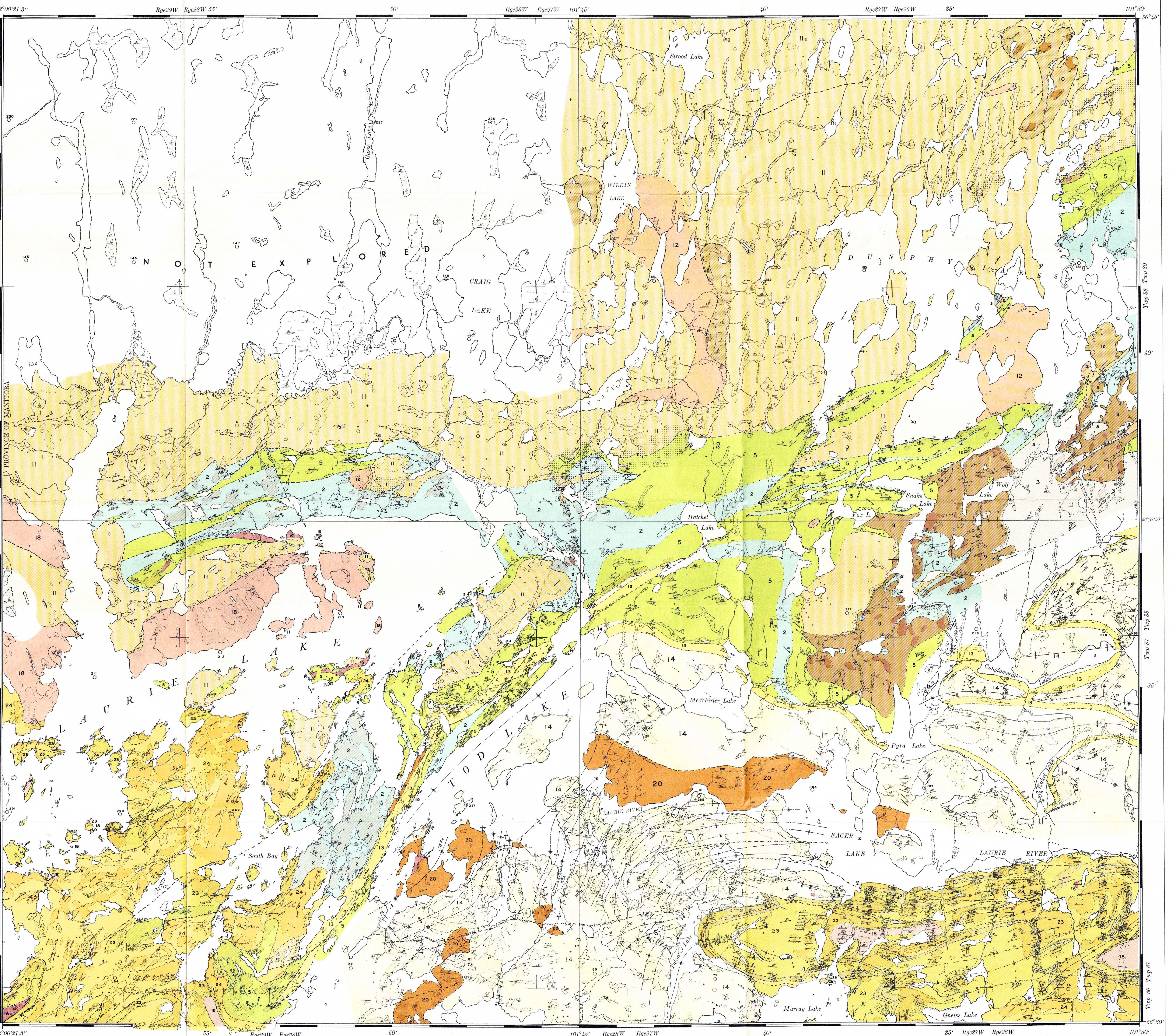
Magnetic declination 17°40' East at centre of sheet, 1950.
Decreasing 6 minutes annually.

Aerial photographs numbered: A11064: 145-156; 219-220
A10944: 4-14; 75-85
A10945: 210-219; 281-291

provide complete stereographic coverage of this area, and are available from the National Air Photo Library, Ottawa.



Index to adjoining sheets.



Base map compiled from aerial photographs taken by the Royal Canadian Air Force in 1941, and from surveys by the Department of the Interior, Canada, and the Province of Manitoba.

LAURIE LAKE
GRANVILLE LAKE MINING DIVISION

